



Fanvil C62 and Elastix Server Setup Guide

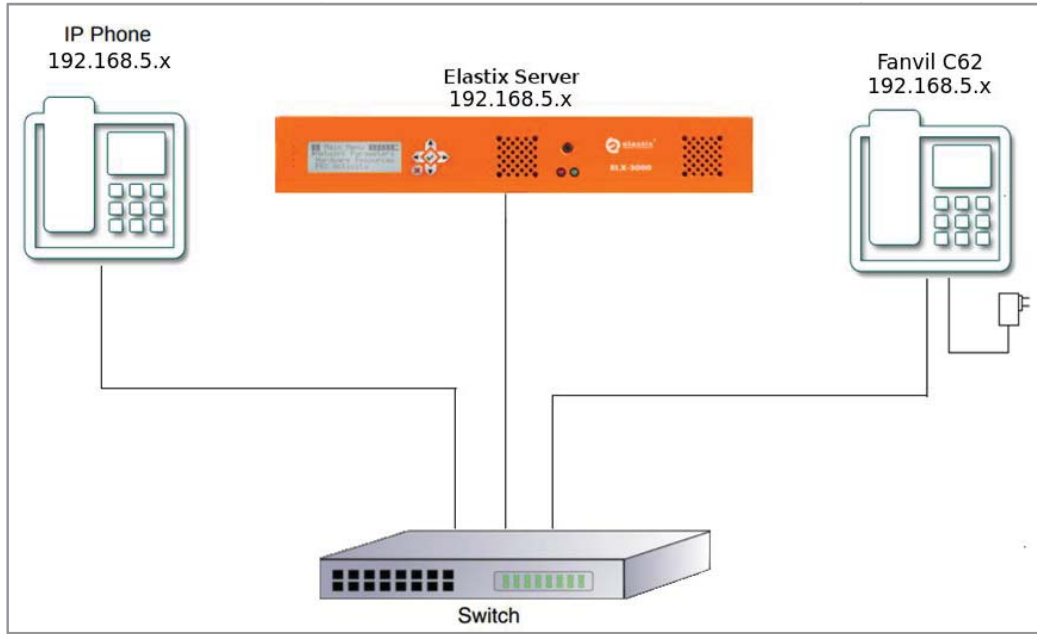




1.0 Setup Diagram

Figure 1-1 is a setup diagram for a single IP Phone Fanvil C62 configuration. The phone is setup as a SIP telephony device.

Figure 1-1. Setup Diagram



2.0 Host PC Environment

Table 2-1. Host Server Environment Details

	Description
Hardware Type	Elastix Appliance ELX-Series
Hardware Version	ELX-3000
Software Type	Elastix
Software Version	2.3

3.0 Test Setup Equipment

Table 3-1. Test Setup Equipment

Equipment	Model	Version
IP (SIP) Phone	N/A	N/A
Fanvil IP Phone	C62	2.2.0.0
Switch	N/A	N/A



4.0 Setup Procedure

To set up the Elastix Server for the Fanvil C62,

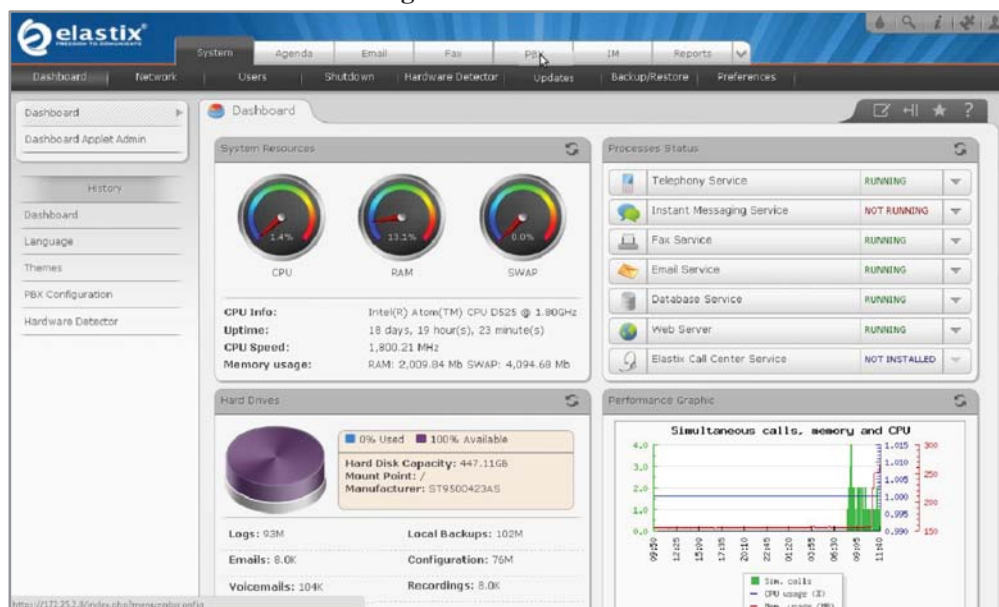
1. Go to the web address of the Elastix Server Login page. The web address is determined by the customer, for this guide we have used the IP address 192.168.1.75
2. On the Login page, type the username and password for an administrative user into the Username and Password fields, see Figure 4-1. The username and password are determined by the customer.

Figure 4-1. Login



3. Press Enter or click on the Submit button to go to Elastix's Dashboard
4. Once inside, click on the PBX tab on the menu at the top of the screen

Figure 4-2. Dashboard





- Click on the Submit button to add an extension, see Figure 4-3. This will take you to the Add SIP Extension page.

Figure 4-3. Add an Extension

- On the Add SIP Extension page (Figure 4-4), fill in the following information:

- **User Extension** (301 in this example)
- **Display Name** ('FanvilC62 in this example)
- **secret** ('h7Dka3Rf9si0t' in this example)

Figure 4-4. Add SIP Extension



7. Click on the ‘Submit’ button at the end of the page. The extension will be created and you will see the page on Figure 4-5 displaying the “Apply Configuration Changes Here” pink ribbon on top of the screen.
8. Click in the “Apply Configuration Changes Here” link

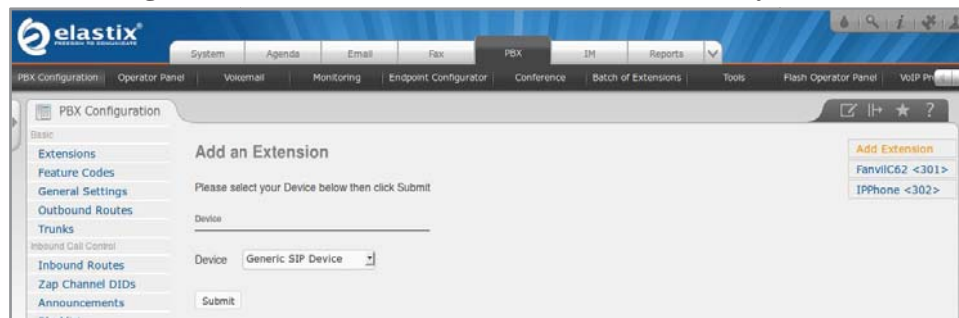
Figure 4-5. Apply Configuration Changes Here



Note: If you want to add an IAX2 extension you have to select “Generic IAX2 Device” from Figure 4-3. Add the same information as SIP extension, submit and apply changes. Then click on the created IAX2 extension and set **requirecalltoken** to **no**.

9. With this you have just finished creating a SIP extension that will be used by the Fanvil C62 to register with the Elastix Server. Repeat Steps 5 through 8 to similarly create another extension (different values on Step 6) to be used by the IP (SIP) Phone to register as well (extension 302 in this example). Once finished you will see something similar to Figure 4-6

Figure 4-6. Fanvil and IP Phone extensions successfully created



10. To register the Fanvil Phone, you will need to enter the information from the extension created on the Elastix Server into the Fanvil Phone by logging into the Fanvil C62 WebUI.

To register the Fanvil Phone we have two methods: **Manual Configuration** and **AutoProvisioning using Elastix’s Endpoint Configurator** (This phone supports this feature in Elastix 2.4 or higher).



MANUAL CONFIGURATION

1. Log in to the Fanvil C62 WebUI by pointing your browser to the Fanvil's IP address.

For the initial configuration of the Fanvil Phone, refer to the Fanvil C62's User Guide which can be found in the Fanvil C62's product page at:

<http://www.fanvil.com/UpFiles/Article/2012/5/8/2012050853766069.pdf>

Factory default settings

WAN	DHCP
LAN	192.169.10.1
Netmask	255.255.255.0
Web Access User Name	admin
Web Access Password	admin

2. When prompted, enter the Web Access Username and Web Access Password to access the Fanvil C62 WebUI (Figure 4-7)

Figure 4-7. Fanvil C62 WebUI

3. Use the information from the Add SIP Extension page (Figure 4-4) to enter the following necessary information on the "Account " section for SIP extension configuration of the Fanvil Phone WebUI (Figure 4-8):

- **Server Address:** Elastix Server's IP Address (192.168.1.75 in this case)
- **Authentication User:** (301 in this case)
- **Authentication Password:** (' h7Dka3Rf9si0t' in this case)
- **SIP User:** (301 in this case)
- **Display name:** The local phone name showed on others phones when calling (FanvilC62 in this case)
- **Enable Registration:** Checked



Figure 4-8

Note: For IAX2 extension, go to “VOIP => IAX2” and set the same fields with the correct values.

4. Once you have entered the required information, click on ‘Apply’ button located at the end of the page. You should see ‘Registered’ in the Status field. If you don’t, make sure you’ve entered the correct information. (See **Figure 4-4**).
5. Configure the other IP (SIP) Phone with the correct parameters.
6. To test the Fanvil C62, pick up the previously configured IP (SIP) Phone and call the Fanvil C62’s extension number (301 in this example). When the call is established, speak into the phone and verify that the other IP (SIP) Phone can hear your voice. Check this by calling from both ends.

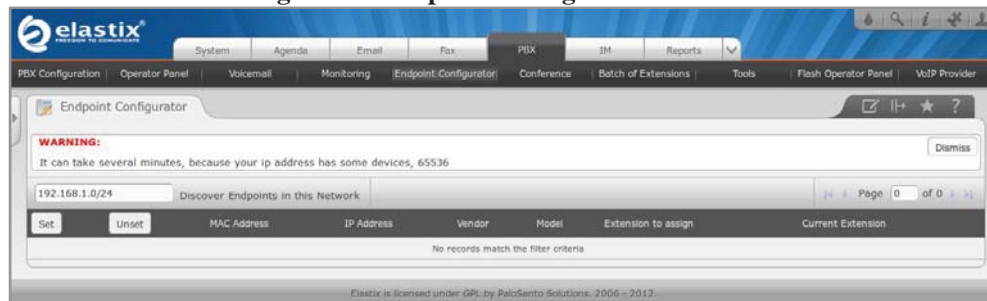


AUTOPROVISIONING USING ELASTIX'S ENDPOINT CONFIGURATOR

Note: Find out the Fanvil C62's IP Address so you can easily identify the phone in the next steps.

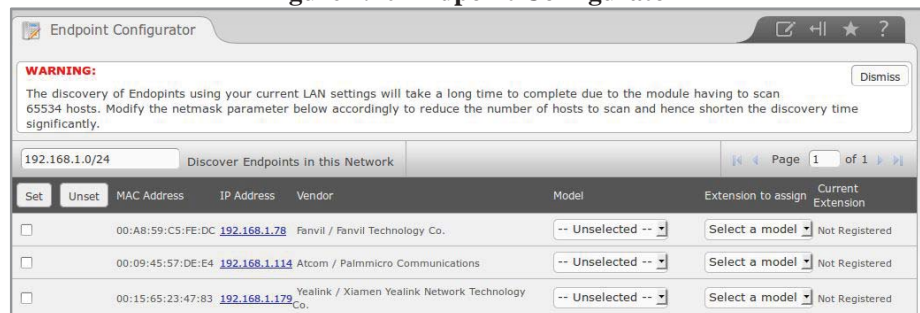
1. In the Elastix WebUI go to “PBX => Endpoint Configurator” (Figure 4-9).

Figure 4.9 Endpoint Configurator



2. Next to the “Discover Endpoints in this Network” button, type the address where the phone is located and click the button. This will generate a list with all the phones available in that network (Figure 4-10).

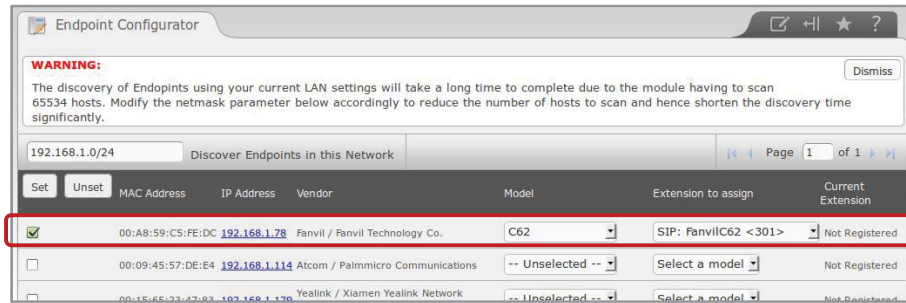
Figure 4.10 Endpoint Configurator



3. In the row where the phone you want to autoprovision is located (find it according to either its MAC or IP Address):
 - Mark the checkbox
 - From the drop-down list, select the correct “Phone Type” (phone model) of the phone
 - From the drop-down list, select the “User Extension” you want to assign to the phone



Figure 4.11 Endpoint Configurator



4. Click the “Set” button. This will reboot the phone. After the phone has finished rebooting, it will be automatically configured with the selected User Extension.
5. Configure the other IP (SIP) Phone with the correct parameters.
6. To test the Fanvil C62, pick up the previously configured IP (SIP) Phone and call the C62’s extension number (301 in this example). When the call is established, speak into the phone and verify that the other IP (SIP) Phone can hear your voice. Check this by calling from both ends.